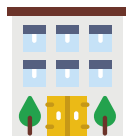


House measurement

1

1 bedroom flat



40-80 ft<sup>2</sup> / 3.7-7.4 m<sup>2</sup>

2 bedroom house/flat



75-120 ft<sup>2</sup> / 6.9-11.1 m<sup>2</sup>

3 bedroom house/flat



100-160 ft<sup>2</sup> / 9.2-14.8 m<sup>2</sup>

4/5 bedroom house



160-240 ft<sup>2</sup> / 14.8-22.2 m<sup>2</sup>



Van measurement

2

small van



20-25 ft<sup>2</sup> / 1.8-2.3 m<sup>2</sup>

medium van



35-50 ft<sup>2</sup> / 3.2-4.6 m<sup>2</sup>

large van



60-80 ft<sup>2</sup> / 5.5-7.4 m<sup>2</sup>

luton van



70-100 ft<sup>2</sup> / 6.5-9.2 m<sup>2</sup>

7.5 truck



120-160 ft<sup>2</sup> / 11.1-14.8 m<sup>2</sup>

Garage measurement

3

half garage



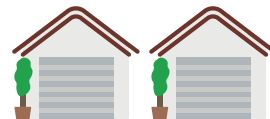
40 ft<sup>2</sup> / 3.7 m<sup>2</sup>

1 garage



80 ft<sup>2</sup> / 7.4 m<sup>2</sup>

2 garages



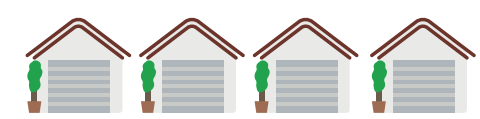
160 ft<sup>2</sup> / 14.8 m<sup>2</sup>

3 garages



240 ft<sup>2</sup> / 22.2 m<sup>2</sup>

4 garages



320 ft<sup>2</sup> / 29.7 m<sup>2</sup>

Archive boxes measurement

4

35-50 boxes



25 ft<sup>2</sup> / 2.3 m<sup>2</sup>

50-100 boxes



50 ft<sup>2</sup> / 4.6 m<sup>2</sup>

100-160 boxes



100 ft<sup>2</sup> / 9.2 m<sup>2</sup>

160-300 boxes



160 ft<sup>2</sup> / 14.8 m<sup>2</sup>

300-500 boxes



240 ft<sup>2</sup> / 22.2 m<sup>2</sup>